



# Arrival Information

## Fall 2025

## Undergraduate Students



## CONTACT INFORMATION

Global Education Office (GEO)

Hours: Monday – Friday 8:00 AM-5:00 PM

Office Location: 2120 Mesa Vista Hall (UNM [Central Campus Map](#) - Building #56)

International Advisors Email: [iadvisor@unm.edu](mailto:iadvisor@unm.edu) (orientation, arrival, and immigration questions)

International Admissions Email: [goglobal@unm.edu](mailto:goglobal@unm.edu) (transcript, application, and scholarship questions)

GEO General Email: [geo@unm.edu](mailto:geo@unm.edu) (hours, appointments, general office questions)

Phone: 505-277-4032 GEO: [global.unm.edu](http://global.unm.edu) International Admissions: [International.unm.edu](http://International.unm.edu)

Web Info for All International Students: [issss.unm.edu](http://issss.unm.edu); [New ISSS Lobo Web Info \(click me\)](#)

Social Media: [MS Teams](#) for incoming students (join instructions on last page)

[UNMGlobal Community](#)  ask to join FB Group @international.lobos Instagram 

---

Hello New International Undergraduate Student!

Congratulations on your acceptance to the University of New Mexico (UNM) for **Fall 2025**! We are writing from the International Student and Scholar Services (ISSS) Unit of the Global Education Office (GEO). ISSS provides services for all international students at UNM. We are excited to welcome you as a new member of our global Lobo family!

The GEO office is located at 2120 Mesa Vista Hall, directly east of the Student Union Building (SUB) in building #56 on the UNM [campus map](#). ISSS advisors can answer questions you have about orientation, visa, immigration, travel, and work requirements. We also organize many events for international students.

Arrival information and videos for new students are under the *Student* tab and *Coming to UNM* on our website at: <https://iss.unm.edu>.

Review this website and the enclosed information NOW to be sure you are aware of all mandatory arrival dates and requirements for new **Undergraduate Degree Students**.

**All undergraduate international students beginning studies in Fall 2025 are REQUIRED to arrive at UNM BEFORE Wednesday, August 13<sup>th</sup>** to complete mandatory check-in and in-person orientation. If you will live off campus you should plan to arrive by August 2<sup>nd</sup> to find housing and complete all requirements before classes begin. A recommended arrival schedule is included in this arrival guide.

Late arrivals MUST be reported in writing to [iadvisor@unm.edu](mailto:iadvisor@unm.edu) and be approved in advance! You CANNOT arrive late without permission and will not be able to arrive more than one week late UNDER ANY CIRCUMSTANCES! Please email us if you have questions.

*We look forward to meeting you and assisting you with your needs as an international student!*

Sincerely,



Phillip Gill  
International Advisor



Fiore Bran-Aragon  
International Advisor



Melissa Aragon  
International Advisor



Miguel Sabol  
International Advisor



Linda Melville  
Director, International Student and  
Scholar Services

---

# CONTENTS:

## **I. Required Arrival Dates and Details**

- a) *When to Arrive*
- b) *Orientation Requirements*
- c) *Check-in Requirements*
- d) *Vaccination Requirements*

## **II. Arrival & Housing**

- a) *How to Get to Campus*
- b) *Airport Pick-Up & Temporary Housing*
- c) *Long-Term Housing Options*

## **III. Immigration Documents & Visa Application**

- a) *Certificate of Eligibility (I-20 or DS-2019)*
- b) *Visa Requirements*
- c) *Required SEVIS Fee*
- d) *When to Apply for the Visa and What to Bring to the Consulate*
- e) *The Visa Interview*
- f) *Instructions for Students Who are Currently Studying in the US (Immigration Transfer Student)*

## **IV. Preparing to come to UNM**

- a) *How soon can I arrive?*
- b) *What you need to enter the US.*
- c) *Health Insurance Requirements*
- d) *What to Do Before You Leave Home*
- e) *Connecting with Other Incoming Students*

## **V. Registration for Classes & Tuition and Fee Payment**

- a) *Registration for Classes*
- b) *Setting up Your UNM Net ID*
- c) *Tuition and Fee Payments*

## **VI. Pre-Arrival Checklist**

## I. Required Arrival Dates and Details

### a) When to Arrive

#### **Recommended Arrival Schedule:**

**August 1-12:** Arrive in Albuquerque (you should arrive as early as possible if you plan to live off campus; Freshman **MUST** live on campus or be approved for an exception). You are permitted to arrive 30 days before the start date on your I-20/DS 2019.

**August 1–13** Attend **MANDATORY GEO post arrival check-in**, find housing, visit department, find classes

**August 14:** Attend **MANDATORY International Orientation from 8:00 am to 3:00pm**

**August 14-17:** Finalize class schedule, explore campus, attend fun events

**August 18:** Begin classes

The date you arrive is **CRITICAL** for a smooth transition to student life. If you are outside the U.S., you cannot arrive more than 30 days before the start date listed on your I-20 or DS-2019 form. **You MUST arrive in Albuquerque before Wednesday, August 13 – No late arrival is allowed.** More details will be communicated to you at the GEO pre-arrival orientation on Zoom on May 23<sup>th</sup> and July 11<sup>th</sup> (details below).

### b) Orientation Requirements

ALL Undergraduate International Students must attend 4 types of mandatory orientations.

**ALL 4 ARE REQUIRED!**

#### **TYPES OF ORIENTATIONS FOR UNDERGRADUATES:**

##### **1. UNM New Student Orientation - NSO**

Register **NOW** to attend the **EARLIEST NSO** possible at: <https://nso.unm.edu/before-orientation/how-to-sign-up-for-nso.html> to get the **best choice of classes**. You will not be able to register for classes until you attend this orientation. During this orientation, you will meet with an academic advisor to choose classes. There are virtual or in-person options available that you can complete. You may opt for the virtual options to complete this requirement earlier.

##### **2. GEO Pre-arrival Orientation on Zoom: Friday, May 23<sup>rd</sup> & July 11<sup>th</sup>, 8:00 – 10:00 AM Albuquerque time** Prior to this meeting, you must set up your [UNM NETID](#), wait 1 day, and then access materials on our [MS Teams for new students](#). There is a lot of material to review on the team. Review it now to be prepared for the meeting on Zoom here:

<https://unm.zoom.us/j/98857727088>

**Meeting ID: 988 5772 7088**

**Passcode: GEOlobo**

##### **3. GEO Check-In in Person: Come to one session as soon as you arrive the first day you're available on August 1<sup>st</sup>, 4<sup>th</sup>-7<sup>th</sup>, 11<sup>th</sup>-13<sup>th</sup> at 9:30 am** (at the GEO office 2120 Mesa Vista Hall).

---

#### 4. GEO Post-arrival Orientation in Person: Thursday, August 14<sup>th</sup>, 8:00 – 3:00

- **MORE INFORMATION ABOUT ORIENTATIONS AND CLASS REGISTRATION**

- **HOLDS:** There are 3 registration *holds* on your UNM account that stop you from registering for classes until you attend your orientations. These are: 1) New Student Orientation (NSO) hold, 2) Academic advisement hold, 3) GEO Orientation hold (this hold does not start until August 1<sup>st</sup>).
- **UNM NEW STUDENT ORIENTATION - NSO:** You cannot enroll for classes until you attend this orientation so sign up for orientation NOW at [nso.unm.edu](https://nso.unm.edu) (choose the *NSO to Go* virtual option if you are not in Albuquerque). Two of your registration holds (NSO and Advisement) will be lifted after you complete all requirements for this orientation.
- **ACT/SAT TEST SCORES:** Students who do not have an ACT/SAT score on file with UNM will need to do placement testing when they register for NSO. If you have taken the ACT/SAT SEND the official score to UNM NOW if you do not want to take the placement test.
- **TRANSCRIPT HOLDS:** Bring your original final transcripts to GEO check-in or orientation if you have not sent them, so that you can avoid a “Final Transcript” hold from International Admissions that will prevent your second semester registration.

#### c) Check-in Requirements

1. **Check-in Session:** You MUST attend one check-in session after arrival at UNM and prior to in-person GEO orientation. Check-In sessions will be weekdays from August 1<sup>st</sup> – August 7<sup>th</sup> & August 11<sup>th</sup> – 13<sup>th</sup> at 9:30 am (about 2 hours long). Call or come to GEO when you get to Albuquerque to sign up for the soonest check-in session. Bring a laptop and digital copies of passport and I-20/DS-2019.
2. **Mygeo portal set-up:** After the Zoom pre-arrival orientation on July 11<sup>th</sup>, you will receive an invitation to create your *mygeo* portal account to begin the check-in process. Prior to arrival you should log in to your account to upload required immigration documents and update emergency contact and other information. You will complete GEO check-in requirements after attending a check-in session at UNM.
3. **Check in Completion:** As soon as possible, but no later than the first week of classes you must complete check-in requirements. This means providing this information in your *mygeo* portal:
  - Scanned copies of all immigration documents –download a scan app; photo files are too large. You will scan passport, I-20 or DS-2019 signed by you on page 1, visa and I-94 (the I-94 is only available AFTER entry to the US)
  - Proof of **long-term** health insurance coverage (requirements below)
  - Emergency contact information
  - Local residential address and phone

**Failure to complete all requirements by the end of the second week of class may result in administrative withdrawal from the University and may mean that you would have to leave the country!**

---

#### d) Vaccination Requirements

Bring all vaccination records with you to the US. They will be required ONLY if there is an outbreak.

## II. Arrival & Housing

#### a) How to Get to Campus

If you will not be picked up from the airport, Uber/Lyft to UNM and to hotels near campus are relatively inexpensive. Bus #50 (free) goes from the airport to the UNM campus in 10 minutes. Ask the bus driver to let you off at UNM (the intersection of Yale and Central Avenues).

Students moving in to UNM campus housing need to make sure they arrive during pre-arranged move-in times. Check your move-in information and contact [housing@unm.edu](mailto:housing@unm.edu) for questions about where and when you can move in.

#### b) Airport Pick-Up & Temporary Housing

- **UNM Student Group Pick-up**

UNM student groups sometimes provide airport pick-up and temporary homestays for new students. Check the UNM Student Activities website at <http://sac.unm.edu/index.html> under [Student Orgs](#) to see if there is a group from your country/region and if so, email the contact to see if they offer this service to new students.

- **Airport Pick-up and Homestay Offered by ISI (Local Community Christian Organization – NOT UNM)**

A non-UNM, community Christian volunteer organization called ISI (International Students, Inc.) offers free airport pick-up and a temporary homestay with a local family usually lasting no more than 5 days. **This service is free.** ISI is a Christian Organization. However, there is no obligation to participate in any religious activities (please report to GEO if you feel any pressure from ISI volunteers to participate in religious activities). If you are interested in airport pick-up or the homestay opportunity offered by ISI, please complete the [ISI service request form](#) on their website ([isiabq.org/services](http://isiabq.org/services)) or contact them at: [ISIABQ@isionline.org](mailto:ISIABQ@isionline.org). ISI airport pick-up and homestays for students arriving for **Fall 2025** will begin at the end of July. You must contact ISI at least two weeks in advance of your arrival for the best chance of getting a homestay placement. ISI also offers house-hunting help, free furniture, cell phone sign-up, free lunches and other services at their International Welcome Center in the two weeks before classes begin. The Welcome Center is at 401 University Blvd. on the northwest corner of Martin Luther King Jr. Dr across from the UNM campus.

- **Living on Campus: Where to Stay Until You Can Move into Student Housing**

Move in day for on-campus housing is from Friday August 14<sup>th</sup> through Saturday, August 16<sup>th</sup> (\*\*Subject to change). If you will live at Lobo Village or Casas del Rio (privately managed housing) please check with them for Move in dates. For housing questions, contact UNM Residence Life and Student Housing at [housing@unm.edu](mailto:housing@unm.edu) or 505-277-2606.

- **Living Off Campus: Where to Stay Until You Can Move into Long-term Housing**



---

If you will not live in UNM campus housing, OR you will arrive before you can move into your campus housing, you will have to find temporary housing off campus. You can use the ISI homestay, local hotels (ask for a UNM student discount) or Airbnb until you can move into long-term housing.

### c) Long-Term Housing Options

- **Freshman Residency Requirement**

**All first-year, full-time undergraduate students under 20 years of age are REQUIRED to live in UNM on-campus housing for the Fall 2025 semester.** More information about the freshman residency requirement is on the housing website: <https://housing.unm.edu/resources-info/freshman-residency.html>. Freshman who don't want to live on campus and who meet certain conditions can apply for a "[Freshman Residency Requirement Exception](#)" through their housing residence dashboard. If your exception is not filed and approved, YOU WILL BE CHARGED FOR UNM HOUSING!

- **Students with no Residency Requirement**

If you do have a choice of living on or off campus, you should think carefully about the kind of housing experience you want. **Please read the [Housing Guide](#) for more information and check the [housing section of our website](#).**

- **On campus Options**

To view UNM campus housing options, visit <http://housing.unm.edu/> and sign up as soon as possible to have the best chance at getting your first choice. REMEMBER you MUST cancel if your plans change or you will be charged! Remember, the full semester charge for housing is due the month you move in!

Regardless of the housing option you choose, **you need to be prepared to pay for temporary housing when you first arrive**, use the ISI volunteer temporary homestay service listed above or contact students from your home country for a temporary place to stay. ISI offers permanent off-campus house-hunting help at their international welcome center before classes begin.

## III. Immigration Documents & Visa Application

### a) Certificate of Eligibility (I-20 or DS-2019)

Most students will find the Certificate of Eligibility to apply for a student visa and student immigration status should be in your admission email (I-20 form for F1 or DS-2019 form for J1). **Please check this form carefully to be sure all your personal information is correct (name, date of birth, etc.).** Print, read and sign the form on the bottom of page 1. If you decide not to attend UNM for this semester, or wish to defer to a future semester, please email [goglobal@unm.edu](mailto:goglobal@unm.edu) immediately.

If your immigration document was not in the email, this should be because either:

- 
- You are coming to UNM from another U.S. institution (called an “immigration transfer” – see section f below and have the international advisor at your current school complete the [transfer form](#))

**OR**

- Your immigration documents will be coming from another J1 program sponsor (for Fulbright and other agency-sponsored students – contact the program sponsor for information about your DS-2019)

If neither of these reasons fit your situation and the immigration document was NOT in the admission email, email [goglobal@unm.edu](mailto:goglobal@unm.edu).

## **b) Visa Requirements**

You will use the SEVIS ID number on your I-20 or DS-2019 form to pay the SEVIS fee and to apply for a student visa at the United States Embassy or Consulate nearest your place of residence only after you are sure you will attend UNM.

**Note:** Canadian citizens do not require a visa but must present an I-20 or DS-2019 form when entering the US from Canada and must pay the SEVIS (Student and Exchange Visitor Information System) fee at least 72 hours before arriving at the border. Non-citizen residents of Canada should check with the US Consulate to find out if they need a visa.

**For information on the U.S. Embassy or Consulate(s) nearest you, please see:**

<http://www.usembassy.gov/>

## **c) Required SEVIS Fee**

All students must pay a mandatory SEVIS fee. This is a U.S. Government fee, not a university fee, and is in addition to any visa fee. Because the payment of the fee will be recorded in the SEVIS system and it **MUST** be fully processed before you arrive at the U.S. Embassy or Consulate for the visa interview, you must pay it at least 3-business days prior to the visa interview, and you must bring proof of payment to the interview. **The fee is associated with your SEVIS number on the top of your I-20 or DS-2019, so if you already paid the fee with that SEVIS number less than one year ago, you do not need to pay again.**

Canadian citizens must present proof of payment of the fee when arriving at the port of entry to the U.S. (they do NOT need a visa). For more detailed information on the fee payment process please go to the SEVIS website at: <https://www.ice.gov/sevis/i901>.

You can pay the SEVIS fee in one of three ways:

- Online at [www.FMjfee.com](http://www.FMjfee.com). Use a credit card and complete the online Form I-901. Once you have submitted the payment print the computer-generated receipt. This receipt will be your proof of payment. Please note that SEVP is unable to accept credit card payments on behalf of students from Ghana, Gambia, Nigeria, Cameroon or Kenya.



- 
- Through Western Union Quick Pay. This option is available in any country where Western Union offers its Quick Pay service. This service allows you to pay the SEVIS fee electronically and directly to the Department of Homeland Security in local currency. You must fill out the I-901 form on [www.fmjfee.com](http://www.fmjfee.com) before you go to Western Union and record or print the unique coupon number to submit your payment (if someone will pay for you they will also need to enter your coupon number in the Account Number field of the Western Union form to pay). To read the detailed instructions for this form of payment, please go to [www.ice.gov/sevis/i901/wu\\_instr.htm](http://www.ice.gov/sevis/i901/wu_instr.htm).
  - Through the mail by submitting a completed Form I-901 and a check or money order drawn from a U.S. bank. The payment confirmation you can print from the FMJ fee website will serve as proof of payment.

#### d) When to Apply for the Visa and What to Bring to the Consulate

You cannot apply for the visa more than 365 days prior to the date your U.S. program begins (check your I-20/DS-2019 for the program start date).

Documents you will need to bring with you to the U.S. Consulate and to the U.S.:

- Passport
- Proof of payment of the SEVIS fee
- Paper copy of the I-20 or DS-2019 form
- UNM acceptance letter
- Proof of finances for your studies
- Any evidence that you intend to return home when you complete your studies (e.g., proof of property, a job or family in your home country)

Contact the U.S. Consulate to find out how to make an appointment, what the fees are, what additional documents you should bring to the interview, and how long it generally takes to process the visa. A list of U.S. Embassy/Consulate websites can be found at [www.usembassy.gov](http://www.usembassy.gov).

**Visa interview and processing times can be long no matter what country you come from. Be smart and get your visa appointment as early as possible!**

#### e) The Visa Interview

GEO recommends the following for any visa interview:

- Be ready to articulate in English briefly and clearly your reason for study in the U.S. and your plan to use your education in your home country after program completion.
- Know how your academic degree will fit into your home country job market.
- Be prepared with the above information, but don't memorize a "speech" which sounds rehearsed.
- Remain calm.
- Ask the consular officer if they will review any documents you brought (even if they don't ask for them).
- In case of a denial, ask that the reason be given to you in writing before you leave the consulate. Only in this way, can you address the U.S. Consulate's concern if you return for a second interview. Reasons

---

for a visa denial are found at: <https://travel.state.gov/content/travel/en/us-visas/visa-information-resources/visa-denials.html>.

- You may be subject to a security check that will delay the visa application process. Therefore, we highly recommend that you apply for the visa as soon as you receive this form.
- **Once you are issued a visa, you should verify that all information is correct and does not contain any typographical errors in your name, date of birth, or other biographical information. Your name and biographical information on the visa must MATCH your passport and your I-20/DS-2019.** Make sure you are issued the correct type of visa, e.g. F1 or J1, NOT F2 or J2. It is extremely difficult to correct these errors once you have left the consulate and nearly impossible once you have entered the U.S., so you want to get these errors corrected BEFORE you leave your home country.
- Finally, once you are issued a visa, the consular officer may seal your I-20/DS-2019 in an envelope and attach it to your passport. DO NOT PACK THE I-20/DS-2019 IN YOUR LUGGAGE!

**f) Instructions for Students Who are Currently Studying in the US (Immigration Transfer Student)**

If you are currently in F1 or J1 student immigration status studying at another school in the U.S. and you will attend UNM with no break or only a brief break in studies (less than 5 months), you will need to process an “immigration transfer” to attend UNM. The [UNM immigration transfer form](#) should be completed by your current international student advisor. Here is what you need to do:

- Before coming to UNM, you should contact the international advisor at your current school and let him/her know the date you plan to finish all work and study at your current school. The advisor there MUST set a “release date” and enter UNM as the “transfer to” school in the SEVIS system (the school [UNM] and date cannot be changed once the *release date* is reached). Have the advisor complete the [UNM transfer form](#) and email it to [goglobal@unm.edu](mailto:goglobal@unm.edu). The UNM I-20 or DS-2019 cannot be sent to you until AFTER the *release date*.
- Within 15 days of the start date on the new I-20 or DS-2019, check in with GEO. You must submit your passport, visa, I-94, and all previously issued I-20s/DS-2019s through the **mygeo** portal. Failure to report with the completed documents within 15 days of the start date may result in immigration problems. If you have not been a full-time student at the last school you were authorized to attend, you should contact the international advisor at that school to discuss how to apply for a reinstatement to student status. If a reinstatement is not possible at your former school, you can contact our office to discuss the possibility of transferring your SEVIS record and requesting the reinstatement through UNM.
- If you plan to travel out of the U.S. briefly between attending a previous institution and attending UNM and you do not have a valid student visa, you must present the UNM I-20 or DS-2019 form, along with financial proof and proof of your intent to return home, to a consular officer at a US Embassy or Consulate abroad to obtain a student visa (please see above for more information about applying for a visa - Canadian citizens do not require entry visas). You will also need to show the I-20/DS-2019 form to the inspecting immigration officer upon entry to the U.S. If you already have a valid student visa and you have not violated the terms of your status, you do not need to apply for a new visa. You will present the UNM I-20/DS-2019 to the immigration officer with your current visa upon re-entry to the U.S.

---



## IV. Preparing to come to UNM

### a) How soon can I arrive?

New students CANNOT arrive more than 30 days prior to the program start date listed on the front of the I-20 or DS-2019 form. Be sure that you do not arrive earlier than that date or you may be sent back to your home country.

### b) What you need to enter the US.

**Do not pack these documents in your luggage; keep them with you:**

- ☐ Passport with entry visa
- ☐ I-20 or DS-2019 form (this may be in an envelope that the U.S. Consulate has given you)
- ☐ Proof of finances to support your stay in the U.S.
- ☐ Money to cover initial costs (**approximately \$5,000 in bank check or accessible cash via an ATM, debit, or credit card; for safety reasons we do not recommend that bring more than \$1000 in cash).** Changing currency is difficult and expensive in Albuquerque so do it before you arrive.

According to U.S. law, you must enter the U.S. using the I-20 or DS-2019 from the institution you plan to attend first. If you enter with a form from a university other than the University of New Mexico, you may be required to report to that university before you will be eligible to transfer to UNM. Upon your arrival in the U.S. the immigration official should review the form and return it to you. They may also stamp your passport and indicate the correct immigration status (F1 or J1) on the stamp. **DO NOT ENTER THE U.S. on a B visitor's visa or WB/WT visa waiver or you will be ineligible to study!!!**

You will need to print out the record of entry (form I-94) at [cbp.gov/I94](https://cbp.gov/I94) every time you enter the US (after you enter). We can show you how to do this when you check in with GEO. This is an important document that records your current legal U.S. immigration status.

**Note:** Citizens of Canada do not require entry visas but must present the I-20 or DS-2019 form, financial proof, and proof of payment of the SEVIS fee when entering the U.S. from Canada. Passports are required for all Canadian citizens entering the U.S. in student status. Canadian students crossing at a land port need to be sure that their I-20 or DS-2019 is reviewed by the immigration official AND confirm the stamp in the passport accurately indicates their F1 or J1 status before they leave the port of entry.

### c) Health Insurance Requirements

**ALL UNM International students are required to have health insurance for their entire stay in the U.S.** and health insurance rules are COMPLICATED! Health Insurance in the U.S. covers medical expenses ONLY. Dental and vision care are extra and not covered by most health insurance, so you should take care of any vision or dental needs before you come. The [UNM Student Health and Counseling Center](#) provides lower cost medical services to all UNM students. **READ more about [health insurance on our website](#).**

---

## 1. Long-term Health Insurance:

### a. Covered Students

- Students on an Athletic Scholarship have insurance through UNM Athletics.
- Students who have U.S. health insurance from a family member or government sponsor can provide insurance through those sponsors to fulfill requirements.

If you are one of these “Covered” students, you should purchase a short-term policy just to cover you during your arrival period before your U.S. insurance starts (skip down to #2, below).

### b. Non-covered Students

All students NOT listed in Section a. above are responsible for buying a health insurance policy on their own. There is no UNM student insurance policy that you can buy. You must choose between buying a Marketplace Health Insurance plan from bewellnm.com (Medicaid for those under 21) OR an International Student (illness/emergency) Plan that covers all the requirements below:

- \$100,000 of coverage per accident or illness
- \$25,000 for repatriation of remains
- \$50,000 for medical evacuation
- No more than \$500 deductible per accident or illness
- Coinsurance must not exceed 25%

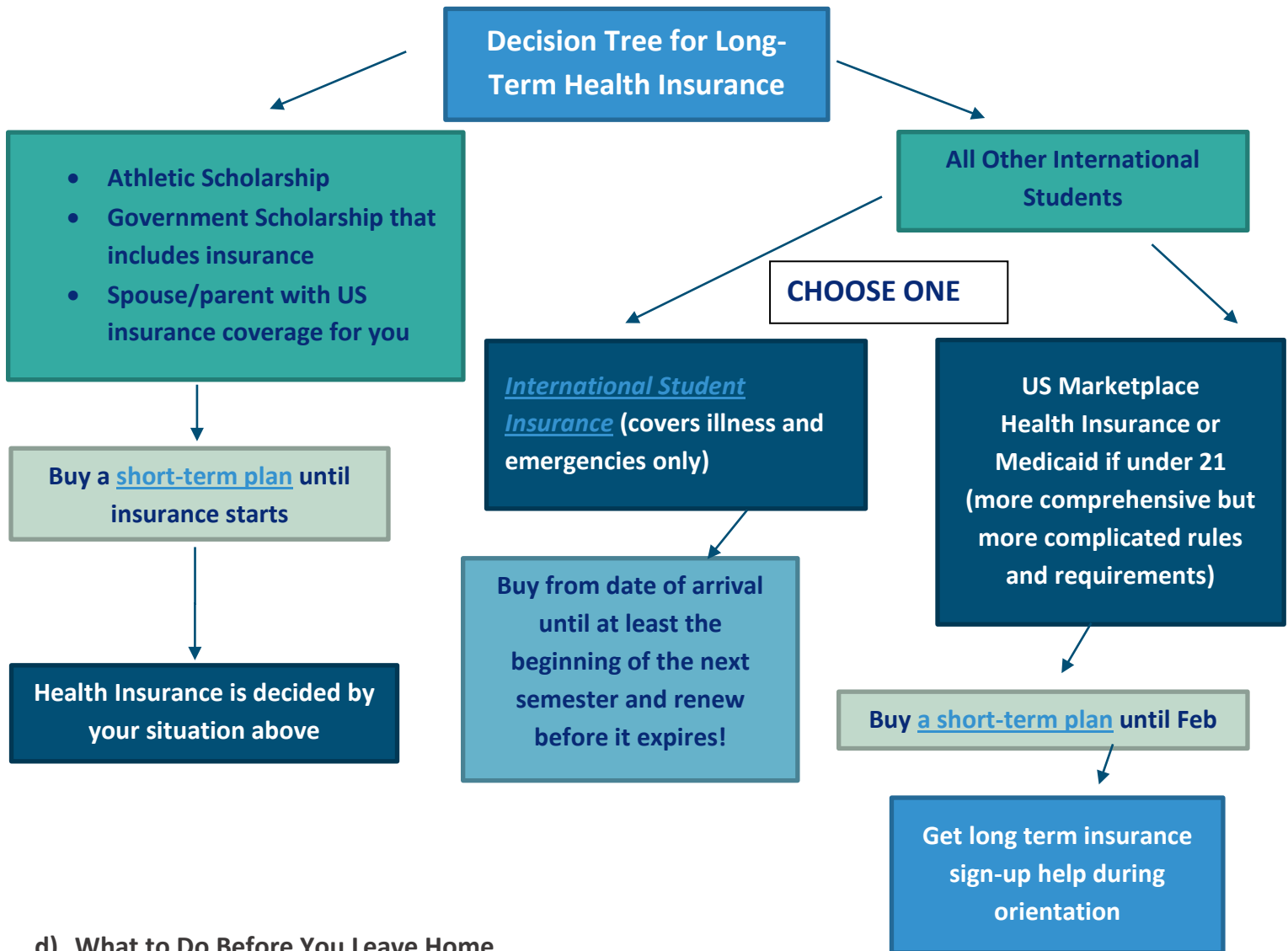
## 2. Insurance During your Arrival Period (BUY BEFORE YOU FLY)!

EVERYONE should buy a policy to cover them from their date of arrival in the US until their US health insurance policy starts. You can buy a short term policy for the exact days you need here: [www.internationalstudentinsurance.com/schools/university-new-mexico.php](http://www.internationalstudentinsurance.com/schools/university-new-mexico.php).

Covered Students (defined above) should buy this short-term insurance from the date of arrival in the U.S. until the day their U.S. insurance starts. Non-covered Students should buy this short-term insurance from the date of arrival through at least Sept 30<sup>th</sup>. This will give you enough time to sign up for insurance upon arrival and for that insurance to start. Non-covered students can also choose to purchase this insurance from the date of arrival to the beginning of the next semester at UNM to meet the health insurance requirement. More information will be provided at GEO orientation.

All four plans on [the website](#) will meet minimum requirements for both temporary and long term insurance. Make sure to read the plan descriptions carefully to find out what the insurance does and does NOT cover! Remember that some of the plans on this site have a waiting period of at least 6 months before they will cover you for pre-existing conditions, so if you have an existing illness, you may need to purchase different long-term health insurance to ensure your medical expenses are covered.

**TAKE CARE OF EXISTING HEALTH PROBLEMS AND GET REQUIRED PRESCRIPTIONS BEFORE YOU LEAVE HOME!**



#### d) What to Do Before You Leave Home

- **DOCUMENTS**

- Download a scanning app and scan all your important documents in pdf format before you come to the U.S. and have access to these copies electronically (scans not images!). These include passport, visa, I-20/DS-2019, financial information, official transcripts, credit card information, international and home country driver's licenses, and birth certificates.
- Give family or friends at home access to these copies in case you need someone to send them to you.

**Remember, you must bring the originals of most of these documents with you to the U.S.**

**Certified original copies of your birth certificate may be necessary for a driver's permit or state ID.**

---

- **MEDICAL**

- Get copies of all immunization records (currently ONLY required if there is an outbreak)
- Bring prescriptions for any regular medications (plus several months' worth of these medications)
- Get extra eyeglasses if you need them – these are expensive in the U.S. and are usually not covered by insurance
- Get your dental work done – dentistry in the U.S. is expensive and not covered by insurance
- Buy one of the [health insurance policies](#) until at least Sept 30<sup>th</sup> to cover you for medical emergencies and then be sure to extend or buy another policy before this one expires!

- **FINANCIAL**

- You should arrive with access to approximately \$5,000 U.S. to cover initial costs (either via ATM or credit card). For your protection, do not carry more than \$1000 in cash, and do not plan on changing money in Albuquerque.

#### e) Connecting with Other Incoming Students

- **WEBSITE:**

- Detailed information and videos regarding arrival are available on our website at <https://iss.unm.edu/students/coming-to-unm/arrival-resources.html>. Please review this information in detail before you come to Albuquerque.
- Download our [New ISSS Lobos Linktree](#) on your phone for fast access to information.

- **SOCIAL MEDIA:**

- *MS Teams*: Request to Join our [GEO New Students Team](#). AFTER you set up your NetID. We will be using this team to post important information for incoming students!
- **Facebook**: Ask to be added to the [UNM Global Community](#) Facebook group to communicate with other students or see our events.
- **Instagram**: follow us at *UNMGlobal* and *international.lobos*

## V. Registration for Classes & Tuition and Fee

#### a) Registration for Classes

You will have **multiple holds that prevent you from registering for classes**. All requirements must be met before *holds* can be lifted allowing you to register (see orientation section, above). A GEO hold will freeze your account beginning August 1st. We cannot remove the GEO hold until you check in with GEO.

However, you can register before August 1 if you finish UNM New Student Orientation (so [Register Now](#) for a virtual NSO). To know what holds are on your account follow the directions listed [here](#). When you meet with an academic advisor at NSO and register, be sure you are registering for classes at the Albuquerque/Main campus. All registration is done online by logging in to <http://my.unm.edu> with your UNM Net ID.



---

#### b) Setting up Your UNM Net ID

If you have not already, you must [create a UNM NetID](#). You will be asked for your Banner ID (student ID#), Birth Date, First and Last Name. Follow the instructions to create a Net ID. To log in to UNM systems, you will need to complete **Multifactor Authentication** using the *Microsoft Authenticator App* (recommended) OR a phone number you can access after arrival at UNM. If you need to change the number, you will need to call UNM IT at 505-277-5757 and you will need your real or UNM-issued temporary Social Security Number that you received in your admission letter. Your NetID will also be your UNM email address ([yournetid@unm.edu](mailto:yournetid@unm.edu)). Once you set up your UNM NetID it is important to check your UNM email! Important updates and billing information will be sent by the University to your UNM email address.

**Note:** Pick a Net ID that is appropriate for school and work. The system will suggest one to you. You will NOT be able to change it later.

#### c) Tuition and Fee Payments

You will not be billed until you register for classes. When you register, you will be billed on the 10<sup>th</sup> of the month and must pay before the 10<sup>th</sup> of the following month. You must either pay the amount in full or arrange for a [payment plan](#). Bills can be paid from abroad via [Flywire](#), US bank account direct payment, U.S. bank check, credit card (2.85% fee) or cash. All bills MUST be paid in FULL before you can register for the next semester.

- Remember that scholarships may not appear in your account until after classes begin.
- Please check the payment due dates and be prepared to pay upon arrival. Submitting late payments will incur late fees and service charges.

**Note:** Cost will depend on your program, scholarships, number of credit hours and course fees for your individual courses. There is also a one-time \$125 fee for international students in the first semester at UNM.

If a sponsor will pay your bill, please send a copy of your financial sponsorship letter to: [thirdparty@unm.edu](mailto:thirdparty@unm.edu). For more information regarding payment, contact the [Bursar's Office](#) at [bursar.unm.edu](http://bursar.unm.edu).

*We extend to you our best wishes for a pleasant trip to Albuquerque and trust you will find your stay at UNM to be both challenging and rewarding. We look forward to meeting you and assisting you with your needs as an international student!*

---

## VI. Pre-Arrival Checklist

### NOW

- ☐ [Attend the GEO Zoom Pre-Arrival Orientation](#) on Friday, May 23<sup>rd</sup> & July 11<sup>th</sup> at 8:00 am US Mountain Daylight (Albuquerque) time
- ☐ Set up your [UNM Net ID](#)
- ☐ Join the [GEO Fall New Students Team](#) (wait one day after NetID set-up)
- ☐ Register for [UNM New Student Orientation](#) - sign-up begins February 2nd
- ☐ [Pay the SEVIS fee](#)
- ☐ Apply for and obtain a valid U.S. visa (except Canadians)
- ☐ [Bookmark](#) New ISSS Lobos [Linktree](#) on your phone for fast access to information

### NEXT

- ☐ Check your email from [iadvisor@unm.edu](mailto:iadvisor@unm.edu) and [MS Teams](#) messages regularly for updates
- ☐ Research your [housing options](#) (reserve if you will live on campus)
- ☐ Purchase airline tickets to arrive in Albuquerque before Wednesday, August 13<sup>th</sup>
- ☐ Have a plan for when you land in Albuquerque (e.g., [airport pick-up/ISI homestay](#))
- ☐ Buy [short-term health insurance](#) to cover you until at least Sept 30<sup>th</sup> and carry proof with you
- ☐ Understand and have a plan to pay your [tuition](#) bill
- ☐ Take care of any medical or dental needs for the next 4+ months (including prescriptions)
- ☐ Scan valid passport, I-20 or DS-2019, visa and financial proof and carry paper copies with you
- ☐ **Pack:** home country documents (like birth certificate/driver's license/national ID/transcripts), medicines, vaccine history and important medical records, some warm clothing, things to remember your home (and any national/cultural items to show others)
- ☐ **Carry-on:** Physical copies of passport (with visa), I-20 or DS-2019, emergency health insurance proof, vaccine records, financial proof (as listed on I-20/DS-2019), cash and credit cards
- ☐ Re-read all pre-arrival information to be sure you did not miss any details
- ☐ Upon arrival: Contact GEO to sign up for the soonest GEO check-in

### EXTRA CREDIT

- ☐ Meet new students on [Teams](#) and Facebook: [UNMGlobal Community](#) Group
- ☐ Review the **Coming to UNM** section under the **Student** menu on the [iss.unm.edu](https://iss.unm.edu) website